



GPA PARTICIPATION COMMITMENT

The purpose of the Participation Commitment is to annually align all staff and families with the mission, values, and Christian foundations of Genesis Preparatory Academy. We believe this alignment is so essential that we host Annual Mission Alignment Meetings for our families to review this document and ensure that all members of our community are unified in purpose and fully understand how to live out our shared Christian values in daily life.

This document also serves as an annual commitment for both families and staff to consistently exemplify Christian character and lifestyle, reflecting the love, grace, and truth of Christ. By partnering together, we affirm our shared dedication to fostering a Christ-centered community where faith is actively lived out, relationships are strengthened, and students are equipped to grow in their walk with Jesus Christ.

OUR SCHOOLS HISTORY

GPA was founded in 2005 and organized under the laws of Idaho for the purpose of providing Christian education in standard K-12 disciplines and biblical studies, of promoting the traditional Christian faith and worldview and developing Christ-like character in the students of the school.

GPA teachers are selected based on experience, abilities, spiritual and academic qualifications. Each teacher is degreed, credentialed/certified, and a follower of Jesus Christ who is dedicated to teaching and the development of students.

GPA operates on the income from tuition, fees, and gifts from our families, friends, and supporters of the school.

GPA is governed by a Board of Directors. The Board of Directors appoints a Head of School to provide day-to-day operational leadership and execute the vision and mission of the school.

GPA is accredited by the Association of Christian Schools International, Cognia (AdvancEd), IHSA, and offers NCAA approved courses

OUR VISION & MISSION

We will provide a God-centered, discipleship-driven, education that partners with parents and the local church to prepare students for life.

OUR EDUCATIONAL PHILOSOPHY

A Christian school depends on a biblical philosophy that provides the correct worldview and essential truths for life so our students may be prepared to assume their proper place in the home, the church, and the community. Accordingly, the following points summarize the Philosophy of Education for Genesis Prep Academy:

EDUCATION

Education is the prerogative and responsibility of parents. The Christian school is in partnership with the home to provide support and assistance in shaping a Christ-like view of truth and reality. We will provide a safe and loving environment for your students to learn and grow. We will seek excellence in all that we do. We will work with you to prepare and equip your students for college, a future vocation, to defend their faith, develop life skills, and to live a life as a disciple-maker of Jesus.

SERVICE

With Christ as our example, students will learn the power of serving others with humility. We will teach students to look not only to their interests but also to the interests of others.

CHARACTER

Students and staff will strive to live like Jesus Christ and be a light at home, at school, and in the community. Whether in school or out, students and staff will be challenged to honor those in authority, be characterized by the fruit of the Spirit, behave responsibly, treat everyone respectfully, and excel in all they do, for the glory of God.

FAITH

Students will receive biblical training to help them grow in their knowledge of and faith in Jesus Christ. By God's grace, students and families will come to know Jesus Christ as their Savior and will communicate God's love to those with whom they interact.

DISCIPLESHIP

At Genesis our students will learn, practice, and live out the discipleship process as directed and defined in Matthew 28. For over two decades, Real Life Ministries of Post Falls has developed and refined internationally recognized disciple-making content encompassing a broad range of teachings and practices. This content was designed to help individuals discover their faith and deepen their relationship with God by committing to following Jesus' teachings and lifestyle.

Based on our partnership with Real Life Ministries and in an effort to standardize our language, become more unified as a GPA family, and create a more intentional disciple-making process, we will be incorporating some of Real Life's discipleship content into our school culture and curriculum so we can all pursue Christlikeness together.

We are committed to our part of coming alongside families and students to help them develop a historical biblical worldview, as well as Christ-like character, values, and priorities through the study and application of God's Word in their personal lives.

Additionally, our students will learn how to share the good news of salvation with a world desperate to hear it, become more comfortable articulating and defending their faith, and helping others grow in their personal, abiding, loving relationship with Jesus Christ.

THE RELATIONAL DISCIPLESHIP PROCESS

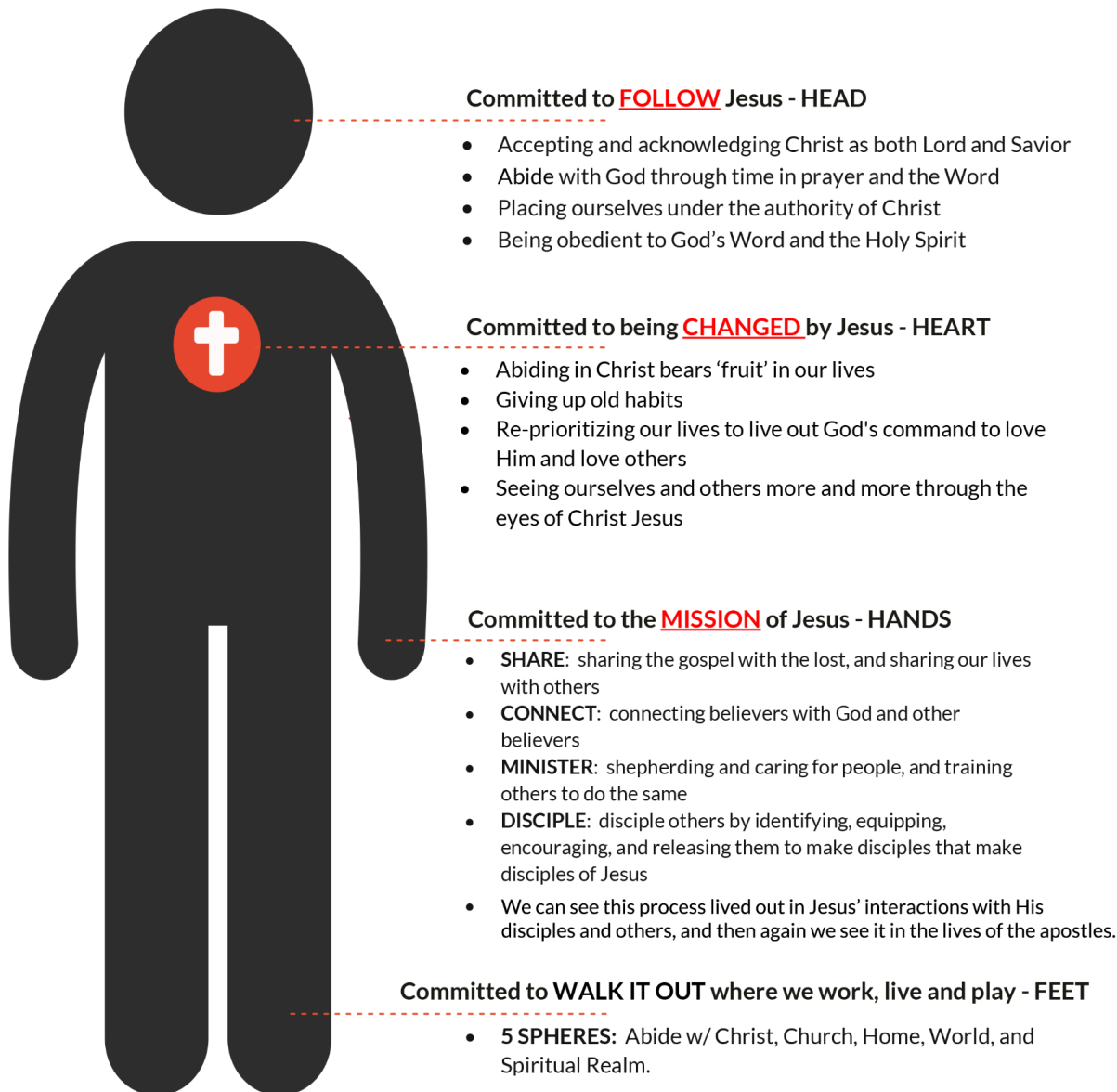
LIVING OUT THE MISSION OF JESUS IS HOW WE MATURE AS DISCIPLES

DEFINITION OF A DISCIPLE OF JESUS

Disciple: *learner doer, pupil, student.* When we accept Jesus as our Lord and Savior we become His disciple, therefore our next question must be "What is a disciple of Jesus?"

The definition is in the invitation

Matthew 4:19 - "Come, follow me," Jesus said, "and I will make you fishers of men."



The process of spiritual maturity through relationship with God and others is called DISCIPLESHIP.

- The result of this process is that we grow close to Christ with the help of others and by helping others in the discipleship process.
- Discipleship is a PROCESS that Jesus lived and MODELED
- It is not enough to know the process. We will seek to live this out in our daily lives.

OUR DOCTRINAL POSITIONS

PREAMBLE

Jesus said that the world would know that we are His because we love one another and because we are one (John 13:35; John 17:21-22). Genesis Prep Academy is a non-denominational Christian school serving people with many different church backgrounds, but we are a family.

Founded on a historical biblical worldview, GPA strives to be unified on those facets of doctrine deemed to be essential for salvation. Additionally, while permitting differing stances on doctrine that are deemed not essential for salvation, for the sake of unity, GPA's stance on these doctrines is included as well.

We believe these statements of faith to be an accurate summary of what Scripture teaches. All members shall refrain from advocating doctrines not included in the statement of faith, in such a way as to cause dissension and/or division.

We start this doctrinal document with the foundation for all the rest. Because scripture is given by God and thus infallible, we seek to understand it according to the Holy Spirit's intended meaning by using proper hermeneutical tools. Our understanding also begins with the clear understandings of the first church as our guide.

GPA Doctrinal Statement: The BIBLE

We believe the Bible is God's Word to us. It was written by human authors, under the supernatural guidance of the Holy Spirit. Because it is inspired by God, the Bible is infallible, inerrant, and absolute truth. It is the ultimate and final authority for Christian beliefs and living.

Supportive Scriptures: Psalms 12:6; 119:105; 160, Proverbs 30:5, 2 Timothy 1:13; 3:16, 2 Peter 1:20-21.

The following doctrines are essential for salvation:

GPA Doctrinal Statement: The Triune GOD

We believe God is self-existent, and by nature, He is eternal, all-knowing, all-powerful, and everywhere. God exists in three persons: the Father, the Son, and the Holy Spirit. The Godhead agrees with the role of each; Creator, Redeemer, and Sanctifier. We believe these three are co-equal and are one God.

Supportive Scripture: Genesis 1:1, 26-27; 3:22; Deuteronomy 6:4; Job 38, 39, & 40; Psalm 90:2, 139:1-4, 7-10; Isaiah 40:13-17, 45:18; Matthew 19:26, 28:19; 2 Corinthians 13:14; 1 Peter 1:2.

GPA Doctrinal Statement: God the FATHER

We believe that God the Father is God and holds all the attributes of God while exercising a unique role in the Godhead. He is the father of Jesus Christ, by the power of the Holy Spirit, and yet still one with both as God. God adopts believers in Jesus Christ into a relationship with Him as their Father. As Father, God actively prunes and disciplines believers so they may grow in character, wisdom, and knowledge of Him and bear the fruit of Christlikeness.

Supportive Scripture: John 15:1-4; Deuteronomy 32:6; Isaiah 9:6, 63:16; John 20:17; Romans 8:14-17; Galatians 4:6.

GPA Doctrinal Statement: God the Son - JESUS

We believe Jesus Christ is God. He is coequal with the Father and Holy Spirit. Jesus participated in the creation of all things and became man, born of a virgin by the power of the Holy Spirit. Jesus lived a sinless human life and offered Himself as the perfect sacrifice for the sins of all people by dying on the cross. He

was raised from the dead, after three days, victorious over the power of sin and death. He ascended to heaven and is seated at the right hand of the Father. He will return with his church, to judge the living and the dead and to make all things new.

Supportive Scripture: Isaiah 9:6; Matthew 1:22-23; John 1:1-5; 8:58; 14:10-30; Acts 1:9-11; Romans 1:3-4; 1 Corinthians 15:3-4; Colossians 1:15-23; 1 Timothy 6:14-15; Titus 2:13; Hebrews 4:14-15; Revelation 1:8.

GPA Doctrinal Statement: God the HOLY SPIRIT

We believe the Holy Spirit is God and is coequal with the Father and the Son as God. He is present in the world to make all people aware of their sin and their need for Jesus Christ. He dwells in every Christian from the moment of salvation. He gives gifts to believers providing them with the power to grow in Christlikeness, to understand spiritual truth, and to serve the mission of the church.

Supportive Scripture: Genesis 1:1-2; Psalm 51:10-12; John 14:16-17, 16:7-13, 17; Acts 1:8; Romans 5:5; 1 Corinthians 2:12; 3:16; 2 Corinthians 3:17; Galatians 5:25; Ephesians 1:13, 5:18; 2 Peter 1:19-21.

GPA Doctrinal Statement: SALVATION

We believe that all have sinned (willful disobedience to God). We believe that the wages of sin are death and eternal separation from God. Salvation is a free gift of God. Jesus Christ's death and his resurrection are the only sufficient payment for our sins. It's only by grace through faith that one can receive this free gift. Eternal life begins the moment one receives Jesus Christ as Lord of their life. This is evidenced by repentance, confession, baptism by immersion, and a life submitted to Christ. We believe a baby, or a young child cannot understand sin or the need for Christ and are under God's grace until an age of accountability determined by God.

Supportive Scripture: John 1:12, 14:6; Romans 5:1, 6:23; Galatians 3:26; Ephesians 2:8-9; Titus 3:5, Romans 10:9-13. Acts 2:38-40, 2 Samuel 12:23; Matthew 18:2-3; 19:13-15.

The following doctrines are essential for unity:

GPA Doctrinal Statement: MANKIND

We believe people are made in the image of God, 'male and female he created them,' to be in relationship with Him, to become like Him in character and to bring him glory. Yet, 'all have sinned and fall short of the glory of God'. Sin separates people from God, affecting all areas of life, resulting in suffering and hopelessness apart from Jesus Christ.

Supportive Scripture: Genesis 1:27; Genesis 3; Psalms 8:3-6; Isaiah 53:6; Isaiah 59:1-2; Romans 3:23.

GPA Doctrinal Statement: THE CHURCH

We believe the church is the body and bride of Christ and also serves as the household of faith. It is a living temple where God dwells in each of His people. We believe that everyone that has been saved by Christ is a member of His church and called to be a connected and beneficial part of His body. We believe that the church is commanded to love God and others, thus relationship is the primary vehicle through which we share the gospel, and through which the church will grow to maturity. We believe that His church exists throughout the world and is witnessed and experienced in local autonomous gathering of believers that are overseen by Elders. We believe submission to God's authority and the authority of the appointed Elders in the local church is essential for unity and reveals our spiritual maturity.

Supportive Scripture: Ephesians. 4:16; Romans 12:4-5; Ephesians 5:24-32; Galatians. 6:10; 1 Peter 2:4-5; 1 Corinthians 3:16; Acts 14:23; Matthew 16:16-18; Acts 2:42-47; Romans 12:5; 1 Corinthians 12:12-27; Ephesians 1:20-23; 4:3-10; Colossians 3:14-15; Romans 13; Hebrews 13.

GPA Doctrinal Statement: COMPLEMENTARIANISM (Gender roles in the Church & Home)

We believe men and women are absolutely equal in essence, dignity and value, but are distinct by divine design. We believe God created two distinct, yet complementary genders for our good, His glory, and to reflect His nature and character to the world. As part of God's created order, men and women are to have different yet complementary roles and responsibilities in the home and church.

We believe that the Biblical Headship as modeled by Christ loving the church applies to the home. Husbands are to love their wives unconditionally and wives are to respect their husbands, both demonstrating Biblical submission and love and sharing equal value in God's design.

We believe as it relates to the church, men and women are both expected to serve and lead; however, the office of Elder/Pastor is reserved for qualified men. Specifically in relation to the Church: Mixed gender teaching environments are overseen by Elders/Pastors and will be led by qualified men. Gender specific teaching environments are taught by a leader of the same gender. Women in leadership roles can be given the title of Ministry Leader, which is our equivalent of the word deaconess. Women may lead women, youth, and children in mixed gender groups as provided by the Elders and designated staff. For more on this doctrine, request and read Real Lives Roles of Men and Women in Ministry Statement.

Supportive Scripture: Genesis 2:18-25; 1 Corinthians 12:4-32; Galatians 3:28-29; 1 Timothy 2:8-15; Titus 2:3-5; 1 Peter 3:1-7, Ephesians 5.

GPA Doctrinal Statement: THE ELDERSHIP MODEL OF THE CHURCH

We believe Christ is the head of the church. We believe the local Church should be governed by a plurality of male elders (who have been appointed by existing Elders) to oversee the carrying out His will in the local assembly of believers.

Supportive Scripture: Acts 14:23; 1 Timothy 5:17; Ephesians 5:23-25; 1 Peter 5:1-4; Acts 13:1-3; 20:26-31; 1 Timothy 3:1-7; 4:14; 5:17,22.

GPA Doctrinal Statement: BAPTISM

We believe baptism, by immersion, was both modeled and commanded by Christ. We believe baptism is only for those who believe in Christ Jesus as their Lord and Savior. We believe one who has believed, confessed and repented should be baptized, in a timely act of obedience.

Supportive Scripture: Matthew 28:18-21; Acts 2:37-38; Acts 8:35-39; Romans 6:4; Colossians 2:12; 1 Corinthians 12:13.

GPA Doctrinal Statement: COMMUNION

We believe celebrating communion was both modeled and commanded by Christ. We believe communion is a memorial, a proclamation, and representative of the new covenant in Christ Jesus as defined by Scripture.

It is a distinction of our church that we take communion every week. We do not believe you have to take communion every week; (however, when you do partake in it, do so in a correct/worthy manner as outlined in scripture. When we take it, we do so in a distinctive manner.)

Supportive Scripture: Matthew 26:26-28; Acts 2:42-47; 1 Corinthians 11:23-30; 10:16; 1 Peter 2:24; Ephesians 1:7, 1 John 1:9, Matthew 5:23-24, Romans 12:1.

GPA Doctrinal Statement: PRIESTHOOD OF EVERY BELIEVER

We believe we have been given direct access to God through Jesus Christ, the great high priest. We believe it is God's design for every believer to play a role in the priesthood, living out the ministry and mission of His Church.

Supportive Scriptures: Ephesians 4:11-13; Romans 12:3-8; 1 Corinthians 12:4-30; 1 Peter 2:5, 9; 1 Peter

4:10-11; Hebrews 4; 10.

GPA Doctrinal Statement: SPIRITUAL GIFTS

We believe there are a variety of gifts, given by the Holy Spirit, to be used to serve and build up the body of Christ and bring glory to God. We believe God has designed the local church like a physical body, consisting of many members, with Jesus Christ as the head. We believe we are interdependent on each other and all believers must be the part God has designed and gifted them to be, if not, the body suffers.

Some in our church believe all the 'extraordinary' spiritual gifts are for today, while others believe that only some of these gifts are for today, still others believe none of these gifts are for today. We believe you can hold any of the views below and still be a Christian. We believe that the Spirit of God does not work contrary to the Word of God, including the issuing and use of spiritual gifts.

At GPA we will act in the following ways in our organized gatherings so that there will be order and unity within the church:

- We believe God performs miracles and answers our prayers
- We believe God empowers us to serve Him and do good works, through the gifts and world of the Holy Spirit.
- We believe that the fruit of the Holy Spirit is an ongoing work in our lives
- Because this is a non-salvation area of contentions between believers, we will not have a place in our organized gathering where the gift of tongues is encouraged.

Supportive scriptures: Romans 12; 1 Corinthians 12-14; Ephesians 4:1-16; 1 Peter 4:7-11.

GPA Doctrinal Statement: STEWARDSHIP & GENEROSITY

We believe our whole lives; our time, talents and treasures, are to be given obediently and generously in response to God's grace, mercy and love for us. We believe that giving 10% of our income is defined as a "tithe", the Biblical starting point of giving to the local church (the storehouse). We believe that any giving over 10% is an "offering" of gratitude for the great things God does for us daily and can be directed at the giver's discretion to any worthwhile ministry, church or organization. We believe that generosity and stewardship are essential to maturity and the accomplishment of Christ's mission.

Supportive Scripture: Leviticus 27:30; Malachi 3:7-12; Acts 4:32-5:11; 2 Corinthians 8:1-9:15; 2 Corinthians 9:6-15; Mark 12:43; 2 Samuel 24:24; Matthew 23:23; Luke 11:42.

GPA Doctrinal Statement: MARRIAGE, GENDER & SEXUALITY

We believe that God wonderfully and immutably creates each person as male or female. These two distinct, complementary genders together reflect the image and nature of God (Gen. 1:26-27). Rejection of one's biological sex is a rejection of the image of God within that person.

We believe that the term "marriage" has only one meaning: the uniting of one man and one woman in a single, exclusive union, as delineated in Scripture (Gen. 2:18-25, Matthew 19:4-6). We believe that God intends sexual intimacy to occur only between a man and a woman who are married to each other (1 Cor. 6:18; 7:2-5; Heb. 13:4). We believe that God has commanded that no sexual activity, of any kind, be engaged in outside of marriage.

We believe that neither the federal government, the state, nor the church, nor any other individual possesses the authority or jurisdiction to set or alter Scripture's definition of marriage. Therefore, unions or partnerships that do not conform to the Biblical definition of marriage are not acknowledged by GPA as marriage.

We acknowledge that some individuals do not have a physical attraction towards the opposite sex, or who do not wish to marry. We believe these brothers and sisters are wholeheartedly supported and encouraged to

remain voluntarily celibate as delineated in Scripture.

We believe that every person must be afforded compassion, love, kindness, respect and dignity. Hateful and harassing behavior or attitudes directed towards any individual are to be repudiated and are not in accord with Scripture nor the doctrines of GPA. We believe that God offers redemption and restoration to all who confess and forsake their sin, seeking His mercy and forgiveness through Jesus Christ.

We believe that in order to preserve the function and integrity of GPA as non-denominational Christian school, and to provide a Biblical role model to GPA members, staff, students/families and the community, it is imperative that all persons employed by GPA in any capacity, or who serve as volunteers, agree to and abide by GPA' Doctrinal Statement on Marriage, Gender, and Sexuality

Supportive Scripture: Genesis 1:26-27; Genesis 2:18-25; 1 Corinthians 6:18, 7:2-5; Hebrews 13:4; Matthew 15:18-20, 1 Corinthians 6:9-10; Matthew 5:16; Philippians 2:14-16; 1 Thessalonians 5:22; Acts 3:19-21; Romans 10:9-10; 1 Corinthians 6:9-11; Mark 12:28-31; Luke 6:31, Matthew 19:4-12, Isaiah 56:3-5.

GPA Doctrinal Statement: GENDER IDENTITY/SEXUAL ORIENTATION/TRANSGENDER POLICY

The term gender has been redefined in our culture to be fluid and subjective, and therefore its use in describing sexual identity is leading to confusion and questions about God's perfect design for individuals, relationships, and society, especially for our children. Therefore, when and if gender is discussed by our staff, we mean biological sex at birth, distinctly either male or female. We recognize there are some very rare medical exceptions to this, however, generally speaking, gender is either biologically male or female, as we define it.

We represent Christ and the Church as we set boundaries and dialogue with students about issues such as these. As individuals created in the image of God, all our students should be made to feel welcomed, loved and valued. At the same time, we cannot affirm their belief that they were created / are the opposite of their biological birth sex. The following are some general guidelines:

GPA represents a historical biblical worldview that God created two sexes; "male and female He created them," that are identified as such at birth and are designed for holy sexuality; fidelity in heterosexual marriage or celibacy in singleness. Pronouns: We will not call students by a pronoun that does not align with their biological (birth) sex. This is because it could look like to them, or other students, that we are affirming their self-created identities also known as genders.

Gender-divided activities, teams, or small groups: students participate with their biological birth sex. Restrooms: students use the restroom of their biological birth sex or a single-use/family restroom if available. Dress Code: student's dress code must match their biological birth sex. Additionally, we do not allow any type of publicly visible clothing, apparel, or flag that represents the LGBT movement or any movement that runs contrary to our doctrinal stance on Marriage, Gender, and Sexuality.

Supportive Scripture: Genesis 1:26-28; Genesis 2:18-24; Romans 1:24-27; 1 Corinthians 13:4-7; Exodus 20:16; Colossians 3:9; Ephesians 4:15; Matthew 19:4; 1 Thessalonians 4:3; Titus 3:9-11; James 3:9-12

GPA's Doctrinal Statement: SANCTITY OF HUMAN LIFE

We believe that all human life is sacred and created by God, in His image. We believe human life is of immeasurable worth in all its dimensions, including pre-born babies, the aged, the physically or mentally challenged, and every other stage or condition from conception through natural death. Therefore we believe

that we are called to teach about the value of human life. Therefore, we believe that abortion and euthanasia are wrong.

Supportive Scripture: Genesis 1:26-28; Psalms 139.

GPA Doctrinal Statement: ETERNAL SECURITY

We believe that a person is saved by grace through faith, and faith is evidenced by action and the fruit in a person's life. We believe faith in Christ Jesus as Lord and Savior is eternal security.

Supportive Scripture: Luke 8:13-14, John 10:27-28, Ephesians 2:8-10, James 2:14, Romans 1:5.

GPA Doctrinal Statement: THE END TIMES (The Return of Christ)

We believe there will be a literal return of Christ and a judgment day. We also believe there will be a literal rapture (a catching up of the saints). As to the day and the hour, only God the Father knows.

Supportive Scripture: Matthew 12:36; 24:36, John 5:22; 16:8, 2 Corinthians 5:10, 1 Thessalonians 4:16-17, 2 Peter 3:7, Jude 6.

GPA Doctrinal Statement: ETERNITY

We believe people were created to live forever. People will either exist eternally separated from God by sin, or exist eternally with God through forgiveness and salvation. To be eternally separated from God is eternal death in Hell. To be eternally in union with Him is eternal life in Heaven. We believe that Heaven and Hell are real places of eternal existence. We believe that as we walk out our faith, we can have assurance of eternal life with God.

Supportive Scripture: John 3:16; 14:17; Romans 6:23; 8:17-18; 1 Corinthians 2:7-9; Revelation 20:15.

GPA Doctrinal Statement: RELATIONSHIPS

We believe that God created us for relationship—relationship with God and with one another. We emphasize the greatest commandments, which are to love God with all of our heart, mind, soul, and strength and to love others as ourselves. It is by our primary relationship with God, through Jesus, with the Holy Spirit working in us, that love and all Godly fruit is possible. It is by our love for one another as Christians that people will know we are true disciples of Jesus Christ. We bring glory to God by living our lives in authentic, life changing relationships with Him and with one another.

Supportive Scripture: Genesis 1-2; Deuteronomy 6:4-5; Leviticus 19:18; Matthew 22:34-40; John 13:34-35; 1 Corinthians 13; 1 John 1:5-7.

GPA Doctrinal Statement: ORDINATION

Ordination through the local church is reserved for men who serve as paid full-time staff for the church. It is overseen and bestowed by the laying on of hands by the Elders. Men who have been identified to serve in pastoral positions in a supported staff role are required to complete ordination. Regular participation and leadership in the following sacerdotal duties are required to maintain ordination: Weddings, Funerals, Preaching/Teaching, Baptism, Communion, and Pastoral Counseling.

Our partner church Real Life Ministries ordains men for ministry under the oversight of our Eldership. If a pastor disqualifies himself, his ordination will be removed. If a pastor moved to another Church ministry outside the oversight of Real Life Ministries Elders, we will recommend that their ordination continue under the leadership of that Church, and that they should reissue his certificate of ordination. In certain cases where a para-Church ministry is involved ordination will be considered on a case-by-case basis.

Supportive Scripture: Acts 13:1-3; 20:26-31, 1 Timothy 3:1-7; 4:14; 5:17; 5:22.

OUR PARTNERSHIP

GPA'S COMMITMENT TO FAMILIES:

The GPA board, administration, faculty, and staff are committed to honoring and respecting students and families when they bring sincere and well-founded suggestions and differences of opinion to our attention. This means that our students will be respected and there will be no basis for fear of retribution. School life involves an enormous amount of time together, challenges, growth, and relationships. We believe conflict is often unavoidable and Matthew 18:15-17 is our guiding process for confronting a fellow brother or sister in Christ who has caused an offense to another and working through conflict, in relationship.

We believe the Lord is most glorified when His children keep the conflict within a circle of two rather than talking about the offense (gossip) to those who are not part of the conflict or part of the resolution. Though we do realize there are times to seek godly counsel on how to proceed.

As mentioned the mission of GPA is to provide a God-centered, discipleship-driven, creative education that prepares students for life. To that end, we strive to follow biblical principles in all areas. Participation and support from the home is expected. By enrolling your child(ren) at GPA, you agree to support the school in its financial policies, parental support expectations, and the school's student behavior/discipline policies as articulated in our Student and Family Handbook.

Education must be the product of a partnership between the school and the home. The importance of open and responsive lines of communication cannot be overstated. The school expects communication between the student, parent and the teacher(s).

Parent/teacher conferences can be held for any student not maintaining passing grades, not achieving expected levels of performance, or consistently not adhering to GPA behavioral rules and regulations. Parent/teacher conferences may be initiated by the teacher, the parents, or the administration.

Parents at GPA agree that God's Word makes them the primary disciple-makers and educators of their child(ren). To develop a historical biblical worldview that impacts not only what they believe but learning to live a life that is pleasing to the Lord based on an intimate relationship with Him.

The purpose of GPA is to partner with parents and students to reach their goals by providing a thorough academic education built upon a historical biblical worldview. God as Creator of life is the focus of Christian education. Additionally, His Word serves as the authoritative standard of truth.

Factual information is the same for the Christian as the non-Christian, but how facts are interpreted can be the difference between truth and error. No subject can be taught in truth if the Creator, Jesus Christ, is ignored or denied.

Therefore, in partnership with parents, GPA seeks:

- ❖ To introduce each student to God and the totality of His character.
- ❖ To see every student born again into a personal relationship with Jesus Christ.
- ❖ To provide an atmosphere that challenges the hearts and minds of students to consider all that is true and edifying and to contrast these ideas, values, and beliefs to those that are false and lead to ruin.
- ❖ To lead students to an understanding of the heights that can be reached and the accomplishments possible by a life fully yielded to Jesus Christ.
- ❖ To encourage and stimulate, by example, the life of Christ lived out in the lives of our students.
- ❖ To equip each student to take his or her place in the world as a disciple of Jesus Christ.

PARENT/GUARDIAN COMMITMENT TO GPA:

To support the school's discipline plan. Therefore, GPA reserves the unconditional right to take disciplinary action, suspend, and/or dismiss any student whose progress, conduct and/or whose parent's/guardian's conduct is considered by GPA, in its sole and absolute discretion, to be unsatisfactory and/or in violation of the mission of GPA. Students and parents also agree to be courteous and respectful to staff, faculty, and other parents and students on campus. Our parents must be confident that they agree with and can uphold the disciplinary policies of the school and their application. ("...do not despise the Lord's discipline and do not resent His rebuke, because the Lord disciplines those He loves, as a father the son He delights in." Proverbs 3:11)

Faithfully support teachers, administrators, and school policies. ("Now I plead with you, brethren, by the name of our Lord Jesus Christ, that you all speak the same thing and that there be no divisions among you, but that you be perfectly joined together in the same mind and in the same judgment." 1 Cor 1:10)
Handle any concerns quietly and only with the person involved. ("If your brother sins against you, go to him privately and confront him with his fault. If he listens and confesses it, you have won back a brother. But if not, then take one or two others with you and go back again, proving everything you say by these witnesses." Matthew 18:15-16)

Enforce the school dress code, giving particular attention to modesty and attention to what may offend others. ("Everything is permissible, but not everything is beneficial. Everything is permissible, but not everything is constructive. Nobody should seek his own good but the good of others." 1 Cor 10:23-24)
Make sure that your child attends school daily and on time. ("The sluggard craves and gets nothing, but the desires of the diligent are fully satisfied." Proverbs 13:4)

Fulfill all financial obligations to the school in a timely and complete manner. ("Give to everyone what you owe them. Romans 13:7)

STUDENT COMMITMENT TO GPA:

- I commit to the pursuit of academic excellence, personal discipline, and godly devotion. I commit to the pursuit of individual spiritual growth, stability, and leadership.
- I commit to the pursuit of a historical biblical worldview through biblical teachings, Bible-based classes and curriculum.
- I commit to the pursuit of developing my identity in Christ as a unique individual created in the image of God.
- I commit to the pursuit of preparing my heart, hands, and mind for service.
- I commit to the pursuit of being equipped to share God's message and methods with the world.

JAG CODE OF CONDUCT

Being a student at Genesis Preparatory Academy (GPA) is a privilege and partnership between the school, parents, and our students. Each partner is responsible for agreeing to uphold their commitment to the partnership.

Foundational in our partnership is trust formation with one another. Genesis Prep faculty and teaching staff trust our students to act in an honorable and courageous way. In the same way, our students can trust our GPA faculty and staff to also act in an honorable and courageous way. Holding one another accountable to the highest standards, through discipleship, helps maintain a culture of excellence. GPA trusts our students to seek help when they observe or suspected violations of our JAG Code of Conduct and confront those not upholding our standards of excellence. Preserving our culture of excellence starts with you.

The following regulations express the basic requirements of our students. A violation of these regulations can create a break in our agreement with one another. GPA will follow a process of progressive discipline for any

of the following offenses. Violations of other offenses not specifically described below can be found in the Student and Family Handbook (Section 6) and may result in disciplinary actions up to and including suspension or expulsion.

- Dishonesty. This includes all offenses covered in the Student and Family Handbook (Section 6). This includes furnishing false information on any work, or submitting other's work as your own.
- Physical or verbal abuse of any person at GPA. This includes sexual or non-sexual assault, violence, harassment, hazing; or any other conduct that threatens or endangers the health, safety, or overall well-being of any student or staff member at GPA.
- Theft of, damage to, or misuse of property of GPA, Real Life Ministries; or possession of stolen property. Property includes intellectual property (e.g., coursework), and other creative content, including print and digital formats.
- Behavior that—on the part of individuals or student organizations—violates the bounds of common decency, modesty, and civility or the highest moral standards entailed in our Doctrinal positions; or that disrupts the climate of academic reflection and discourse proper to serious study; or that attempts to undermine or disrupt the academic, religious, or our moral commitments to one another.
- Disorderly, lewd, indecent, or obscene conduct or expression, or inordinate displays of public affection.
- Improper, offensive, abusive, disparaging, threatening, lewd, indecent, pornographic, or obscene conduct, communication, or material on an online social network or third-party website, cell phone, email, Twitter, Facebook, blog, or other social media.
- Use, possession, distribution, or being in the presence of any amount of unauthorized substances (including legal and illegal drugs that cause impairment or drug paraphernalia, such as vaping pipes).
- Illegal or unauthorized possession or use of firearms, knives, explosives, fireworks, dangerous chemicals, and/or other devices that can be weaponized.

Failure to uphold this GPA Participation Commitment as well as the JAG Code of Conduct and the policies, procedures, regulations, and guidelines set forth by the school in the Student and Family Handbook may result in disciplinary action ranging from a minimum of a warning to a maximum of expulsion.

SIGNATURE OF COMMITMENT

By signing this GPA Participation COMMITMENT: (check the box & initial next to the box that best describes your commitment)

Parent/Guardian:

☐ I confess to be a follower of Jesus Christ and have accepted Him as my personal Lord and Savior AND I commit to abide by the commitments in this document.

Student (MS/HS only):

☐ I confess to be a follower of Jesus Christ and have accepted Him as my personal Lord and Savior AND I commit to abide by the commitments in this document.

Or:

Parent/Guardian:

☐ No confession but I commit to abide by the commitments in this document.

Student (MS/HS only):

☐ No confession but I commit to abide by the commitments in this document.

Personal Comments: (optional)

Signatures:

Student

Date

Parent / Legal Guardian

Date

Parent / Legal Guardian

Date

[For Staff, Board Members, Volunteers, Coaches Etc.]

By signing this GPA Participation COMMITMENT: (check the box & initial next to the box that best describes your commitment)

School Staff, Board Member, Volunteer, Coaches & etc.:

☐ I confess to be a follower of Jesus Christ and have accepted Him as my personal Lord and Savior AND I commit to abide by the commitments in this document.

Signature

Date